

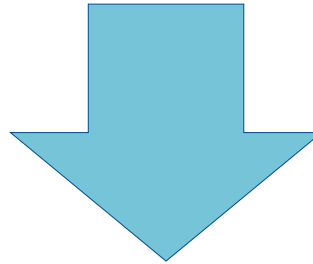
Precision Radiation Medicine requires a rethinking of the role of imaging in radiation therapy

Getting a good image of the anatomy not only once as a picture
but continuously multiple images per second

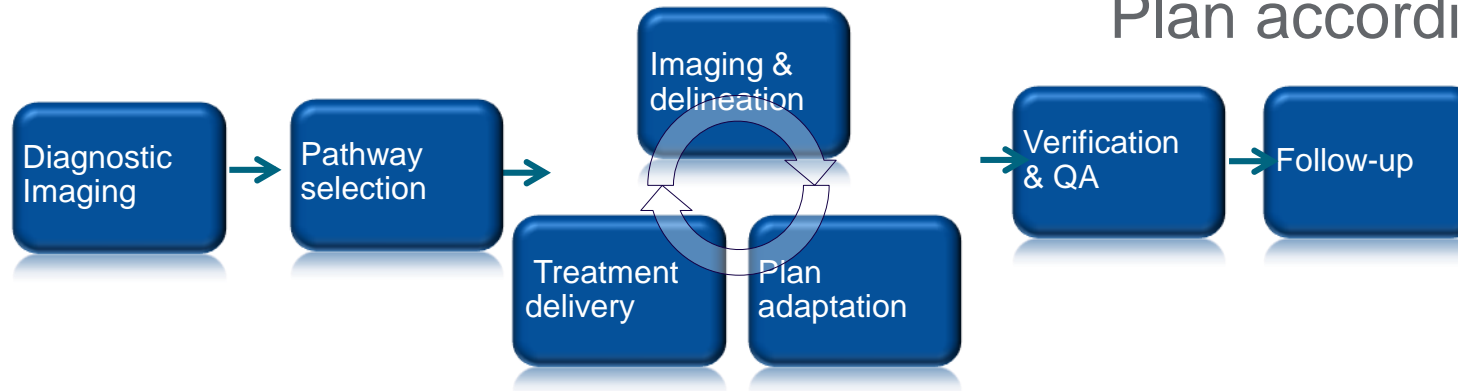
Precision Radiation Medicine: Workflow integration



Off-line



Position patient to predetermined plan

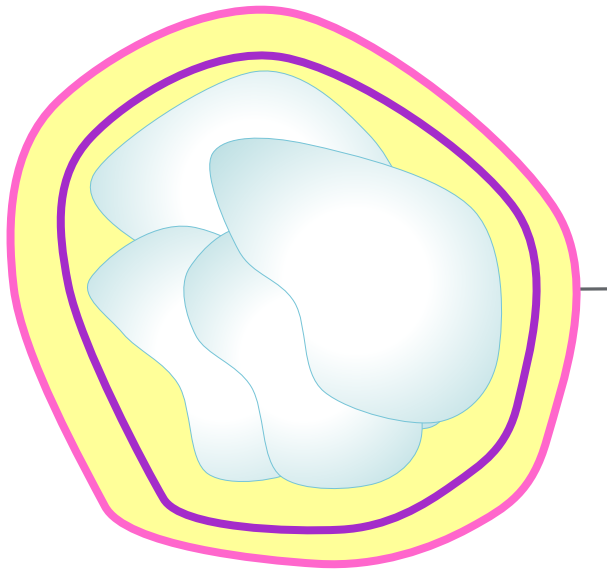


Plan according to anatomy

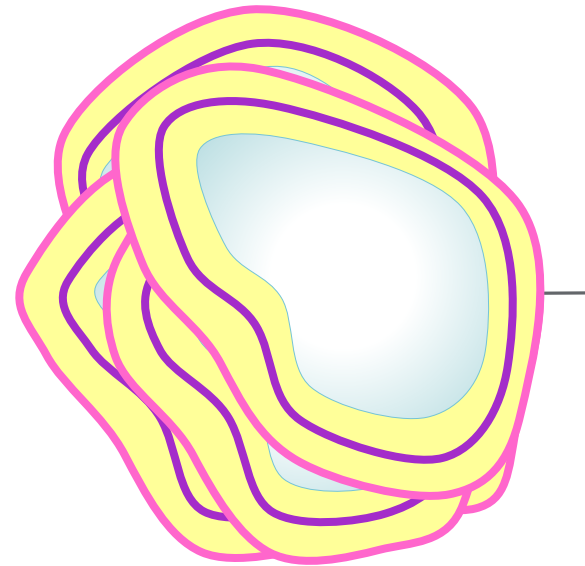
On-line to real-time

Consequences of set-up and motion uncertainties

- Day to day changes in shape and position

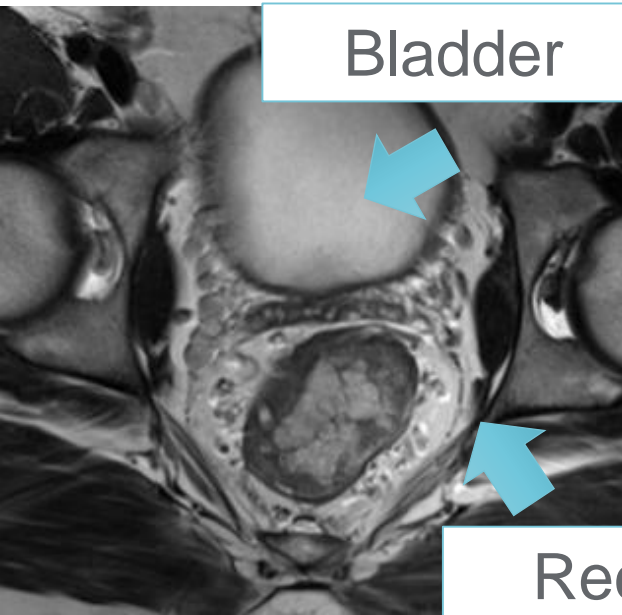
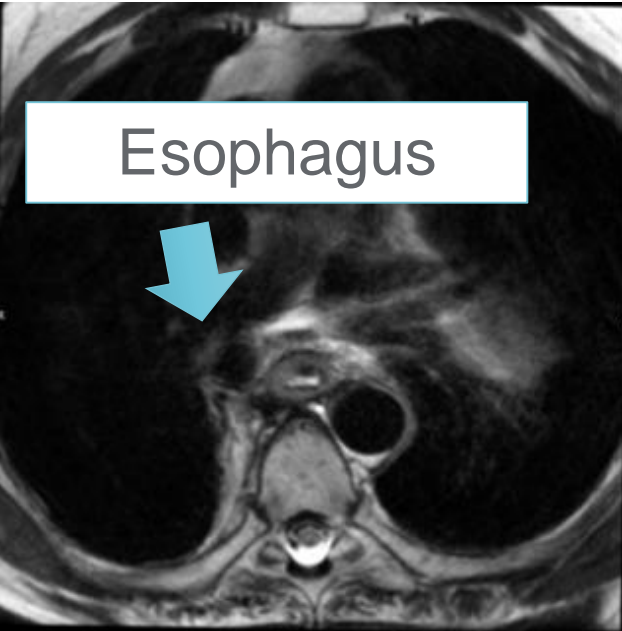


Conventional PTV approach

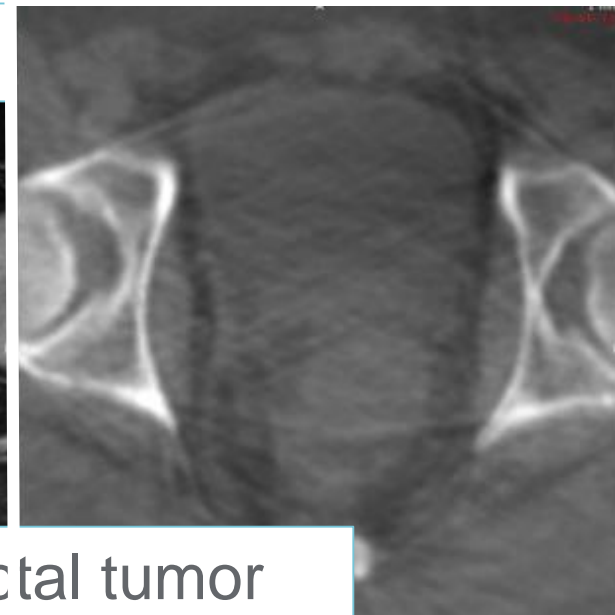
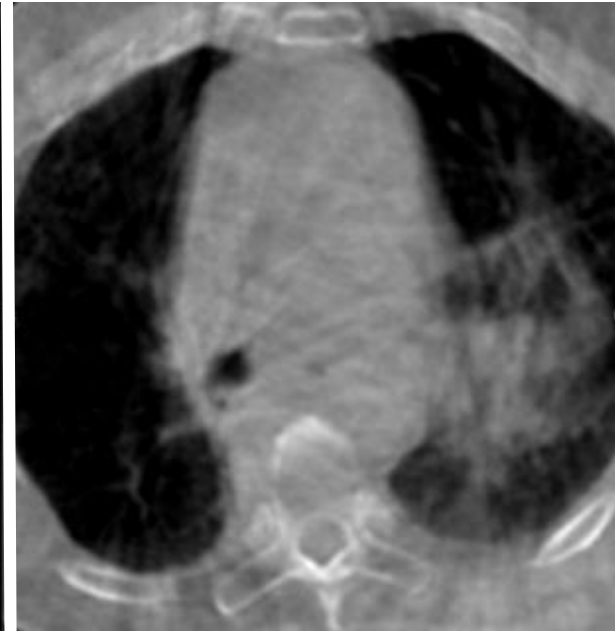


Shape compensated MR/RT

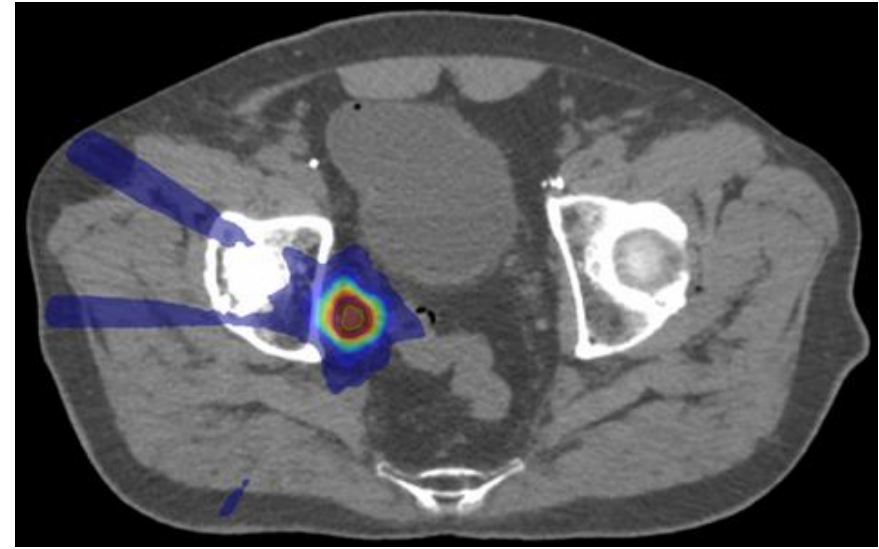
MR-Linac (New)



Cone Beam IGRT (Today)



Pretreatment CT plan



On-line MR adapted plan

